



## Supplementary Material

# Bioaccumulation of Some Potentially Toxic Heavy Metals in Freshwater Fish of River Shah Alam, Khyber Pakhtunkhwa, Pakistan

Hazrat Ali<sup>1,2,\*</sup>, Ezzat Khan<sup>1,\*</sup> and Muhammad Jamal Nasir<sup>3</sup>

<sup>1</sup>Department of Chemistry, University of Malakand, Chakdara 18800, Dir Lower, Khyber Pakhtunkhwa

<sup>2</sup>Green & Environmental Chemistry, Ecotoxicology and Ecology Laboratory, Department of Zoology, University of Malakand, Chakdara 18800, Dir Lower, Khyber Pakhtunkhwa

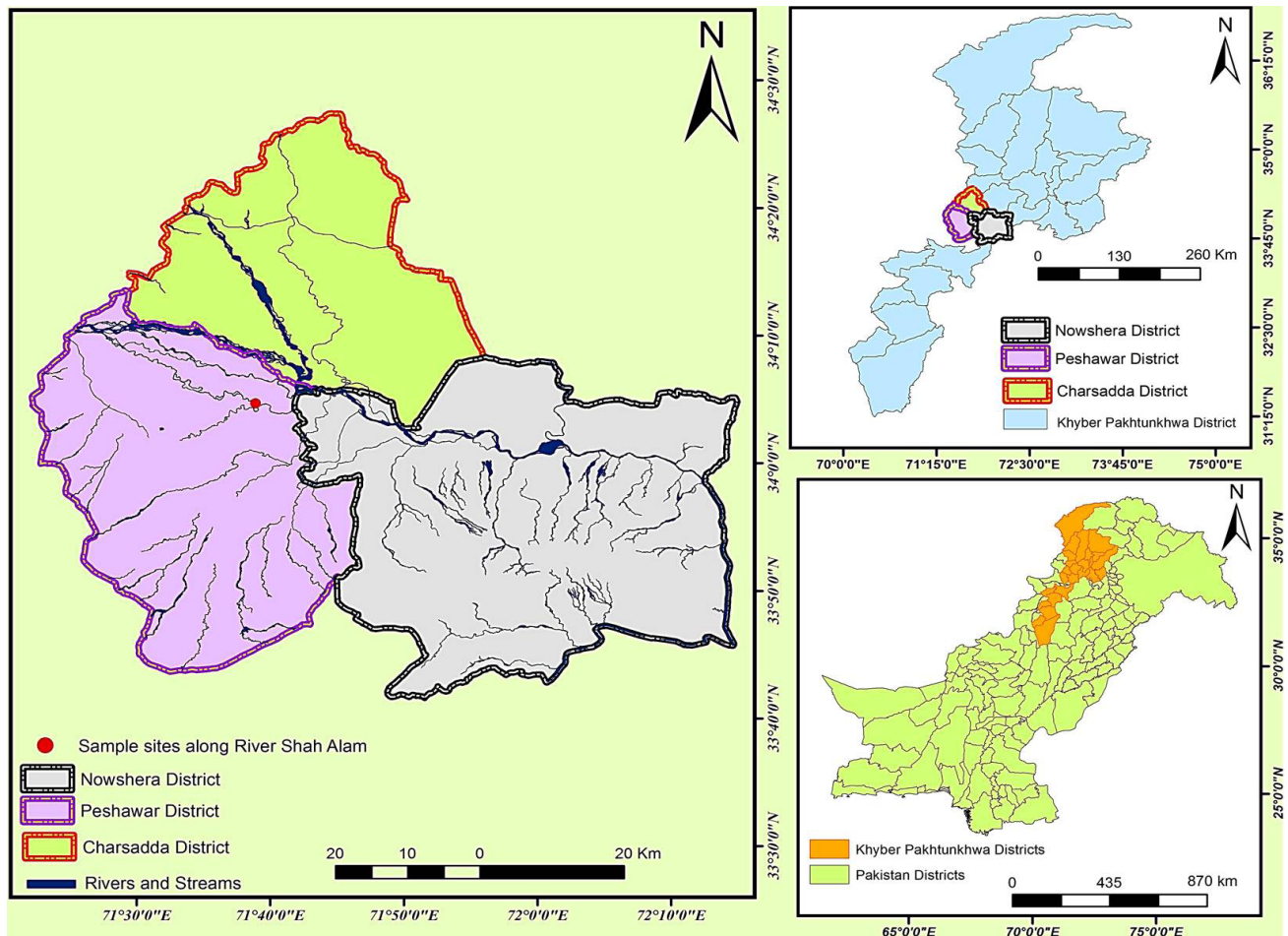
<sup>3</sup>Department of Geography, University of Peshawar, Peshawar, Khyber Pakhtunkhwa

\* Corresponding authors: [hazrataliuom@gmail.com](mailto:hazrataliuom@gmail.com);

[hazratali@uom.edu.pk](mailto:hazratali@uom.edu.pk); [ekhan@uom.edu.pk](mailto:ekhan@uom.edu.pk)

0030-9923/2020/0002-0603 \$ 9.00/0

Copyright 2020 Zoological Society of Pakistan



Supplementary Fig. S1. Map of the study area showing the sampling site.

**Supplementary Table I.- Limits of detection (LODs) and metal recoveries from reference materials (standards).**

Metal	LOD ( $\mu\text{g L}^{-1}$ )	Concentration (ppm)		% Recovery
		Measured	Standard	
Cr	6	4.980	5.000	99.60
Ni	3	1.960	2.000	98.00
Cd	0.8	1.975	2.000	98.75
Pb	15	0.985	1.000	98.50